

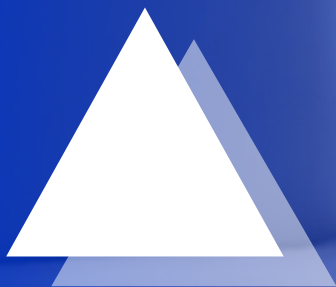


LUDWIG  
BOLTZMANN  
GESELLSCHAFT  
Career Center

Annually in February

# WINTER SCHOOL REVISE & REVITALIZE

ACADEMIC WRITING, PRESENTATION &  
HEALTHY WORKING SKILLS FOR RESEARCHERS



# WRITING & PRESENTATION + HEALTHY WORKING IN RESEARCH

hosted by



The 6-day Winter School offers pre- and post-doc researchers the opportunity to learn the fundamentals of scientific writing and presentation in a productive and supportive atmosphere. Additionally, participants can develop their own writing projects further under the guidance of a writing coach during the included writing retreat. The overarching theme of healthy working in research is integrated to provide participants with concrete tools for increasing productivity and maintaining work-life balance.

## GOAL

The goal of the Winter School is to demystify the unwritten rules of scientific writing and provide researchers with a clear blueprint for their articles and presentations. Modules on scientific writing and presentation are balanced with revitalize sessions that focus on holistic health and insights on how to build a sustainable career in research and healthy work habits.

## TARGET GROUP

The target group for the Winter School are junior and senior researchers working on English-language dissertations or journal articles who want to develop their skills for further careers in academia or scientific communication. 14 participants will be selected according to an application process. The program language is English.



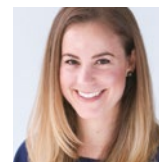
# PROGRAM MODULES

The program is composed of 3 days of inputs on academic writing, presentation and healthy working followed by a 3-day writing retreat. Writing & revitalize coaching sessions, fireside evenings and peer exchange complement the Winter School.



## WRITING PAINLESSLY & EFFECTIVELY

How can you build an argument and structure your writing to publish successfully? Dr. Katherine Caves (Lab Director CEMETS, ETH Zurich) explains the unwritten rules of writing to get your research published including argumentation, structure, style, and writing for the right audience.



**DR.  
KATHERINE  
CAVES**



## SHARPEN YOUR PRESENTATION SKILLS

How can you create impact, inspire your audience, and leave a lasting impression with your presentation? Alison Joyce (presentation skills trainer & coach) shows you how to create and deliver presentations that will impress your audience.



**ALISON  
JOYCE**



## WRITING SESSIONS & 1:1 COACHING

In a peaceful retreat outside Vienna, you can work on your writing project with the guidance and support of our writing coach Marc Abernathy (writing coach & editor) in structured writing and 1:1 coaching sessions. To refine your writing project further Marc offers optional 1:1 online sessions after the Winter School.

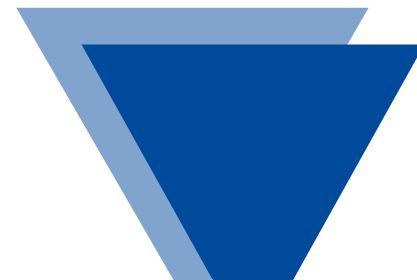


**MARC  
ABERNATHY**



## ON THE SAME PAGE - PEER EXCHANGE

How do you know you are communicating what you intend to in your writing? Marc Abernathy introduces an effective peer feedback method that strengthens your ability to give, receive, and integrate feedback on your work.





## Testimonial

»The Winter School was such a special time. Not only did I improve my research skills, but I also became part of an incredibly supportive community. The biggest gift for me was learning lots about myself: who I am as a researcher and person and how I can better appreciate that.«

Pre-Doc Participant

## FINANCING

The LBG Career Center covers the costs for the Winter School including participants' meal and hotel costs (excluding alcoholic beverages).

Registration of participants is binding and failure to attend without a doctor's note or a reasonable justification (e.g. unforeseeable emergency) will result in a fee of 4,200 EUR.

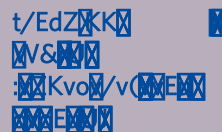
The LBG Career Center is kindly supported by funds from Österreich-Fonds through the National Foundation for Research, Technology and Development.

## APPLICATION CRITERIA

Apply with a letter of motivation (max. 1 page) detailing how the Winter School would benefit your career development, your CV (max. 2 pages), and an abstract of the paper you plan to revise during the program. Applicants must be pre- or post-doc researchers affiliated with an Austrian research organization or university. All fields of study are accepted.

## DEADLINE & DATES

The Winter School is usually planned once a year in February. Please visit our homepage for the current application deadline and program dates.



## CONTACT & APPLICATION

**MAG. CHRISTINE HUDETZ, MA**  
Program Manager

LBG Career Center | Ludwig Boltzmann Gesellschaft  
T +43 676 411 1146 | christine.hudetz@lbg.ac.at  
cc.lbg.ac.at | lbg.ac.at



Visit our website  
for more information:  
[cc.lbg.ac.at/winter-school](https://cc.lbg.ac.at/winter-school)

# PROGRAM SCHEDULE

	Vienna, Seminar Room			Lower Austria/Hotel		
	Monday	Tuesday	Wednesday	Thursday	Friday	Saturday
8:30	<b>WELCOME COFFEE &amp; TEA</b>	<b>REVITALIZE MORNING</b>	<b>ARRIVAL</b> at hotel	<b>REVITALIZE MORNING</b>	<b>REVITALIZE MORNING</b>	<b>REVITALIZE MORNING</b>
10:00	<b>REVITALIZE &amp; TEAM BUILDING</b> Christine Hoffmann	<b>SHARPEN YOUR PRESENTATION SKILLS</b> Alison Joyce	<b>WRITING PAINLESSLY: ARGUMENTATION</b> Katherine Caves	<b>WRITING RETREAT INTRODUCTION</b> Marc Abernathy	<b>WRITING SESSION &amp; 1:1 COACHING</b> Individual Working Marc Abernathy Christine Hoffmann	<b>WRITING SESSION &amp; 1:1 COACHING</b> Individual Working Marc Abernathy Christine Hoffmann
11:00				<b>REALISTIC PLANNING &amp; GOAL SETTING</b> Marc Abernathy		
12:00				<b>WRITING SESSION &amp; 1:1 COACHING</b> Individual Working Marc Abernathy Christine Hoffmann		
13:00	<b>LUNCH BREAK</b>					
14:00	<b>SHARPEN YOUR PRESENTATION SKILLS</b> Alison Joyce	<b>SHARPEN YOUR PRESENTATION SKILLS</b> Alison Joyce	<b>REVITALIZE</b>	<b>REVITALIZE</b> Christine Hoffmann	<b>REVITALIZE</b> Christine Hoffmann	<b>REVITALIZE &amp; REFLECTION</b> Christine Hoffmann
15:00			<b>WRITING EFFECTIVELY: STYLE &amp; AUDIENCE</b> Katherine Caves	<b>WRITING SESSION &amp; 1:1 COACHING</b> Individual Working Marc Abernathy Christine Hoffmann	<b>ON THE SAME PAGE: PEER EXCHANGE</b> Marc Abernathy	
16:00					<b>WRITING SESSION &amp; 1:1 COACHING</b> Individual Working Marc Abernathy Christine Hoffmann	<b>FAREWELL 16:00</b> bus transport to Vienna
17:00			<b>REVITALIZE</b> Christine Hoffmann	<b>REVITALIZE</b>		
18:00	<b>DINNER</b>	<b>FREE</b>	<b>DINNER</b>			<b>FREE</b>
19:00	<b>EXPERT TALK</b>		<b>FIRE SIDE CHAT</b>	<b>ALMOST THERE: CHECKING PROGRESS, REVISING GOALS</b> Marc Abernathy	<b>FREE</b>	
20:00						

## IMPRESSUM

LBG Career Center, Ludwig Boltzmann Gesellschaft GmbH, Nußdorfer Straße 64, 4. Stock, 1090 Wien, Österreich, office@lbg.ac.at, +43 1 513 27 50  
 Design: Knaack, cover photo: Drobot Dean / Adobe Stock, photo page 2 and 4: © Joanna Pianka, photo Marc Abernathy: © Tanita Karkuth, Christine Hoffmann: © Andrea Klem  
 Christine Hudetz: © Fernanda Nigro